

How to use the Fine Arts media ICC profiles with the HP Designjet 30/90/130 driver and Adobe Photoshop



Application: Adobe Photoshop CS

Printer: HP Designjet 30/90/130 series

Software: HP Driver

3rd Party Media:

Hahnemule Photo Rag 188gr.

Hahnemule Photo Rag Duo 196gr.

Arches Infinity Texture 230.

Arches Infinity Smooth 230.

Digital Arts Supplies DAS Geo Canvas.

Hahnemuhle William Turner Textured 190.

Hahnemuhle William Turner Textured 310.

HP Media:

HP Canvas Matte.

* These profiles and media recommendations are provided "AS IS" with no guarantees, warranty or support, expressed or implied.

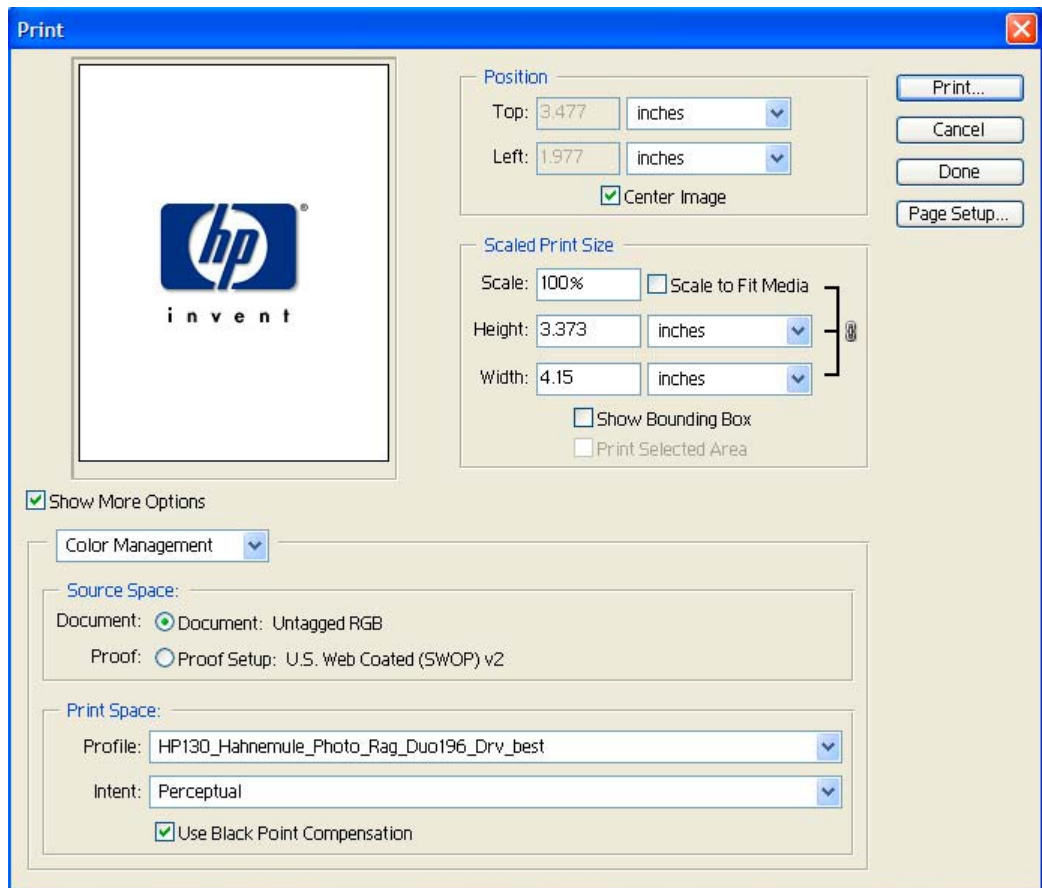
1. First, download the profiles and copy them to these folders:

Windows: *Program Files\Common Files\Adobe\Color\Profiles.*

Mac OS 9: *System Folder: Application Support/Adobe/Color/Profiles.*

Mac OS X: */Library/Application Support/Adobe/Color/Profiles.*

2. Load the 3rd party media into the printer (see the picking recommendations under section 5). Remember to calibrate it using the media type and print mode that you will select in the driver (see also the media type and printmode recommended under section 5).
3. Open the **Adobe Photoshop** application and open your image.
4. Print the image, configure Adobe Photoshop **Print with Preview...** settings, **File menu > Print with Preview...**:
 - a) Select **Show More Options**.
 - b) Select the **Color Management** tab and change the settings to the following:
 - i) **Source Space:** Document.
 - ii) **Print Space Profile:** Select the ICC profile you have just downloaded and installed in your computer.
 - iii) **Intent:** Perceptual (RGB images) or Relative Colorimetric (CMYK images).



- c) Select **Print...**
 - d) **Printer:** Select the printer (ex. HP designjet 130).
5. The location of the settings for the HP Designjet 30/90/130 driver depends on which operating system you have. Use these settings:
 - a) Select the next **Media Type** and **Print Quality** depending on the 3rd party media loaded in your printer, see next list.

See also the recommended **Picking options**.

3 rd Party Medias	Driver Settings		Picking		
	Media Type	Print Quality	Media Size	Tray	Rear
Hahnemule Photo Rag 188gr	HP Premium Heavy Coated Paper	Best	B	Yes	Yes
			C	Yes	Yes
			Roll	N/A	
Hahnemule Photo Rag Duo 196gr	HP Premium Plus Photo and Proofing Gloss	Best	B	Yes	Yes
			C	Yes	Yes
			Roll	N/A	
HP Canvas Matte*	HP Premium Heavy Weight Coated Paper	Best	B	N/A	
			C	N/A	
			Roll	Yes	
Arches Infinity Texture 230gr	HP Premium Heavy Weight Coated Paper	Best	B	No	Yes
			C	No	Yes
			Roll	No	
Arches Infinity Smooth 230gr	HP Premium Heavy Weight Coated Paper	Maximum (Best may work in some cases)	B	Yes	Yes
			C	Yes	Yes
			Roll	No	
Digital Arts Supplies DAS Geo Canvas	HP Coated Paper	Best	A5	Yes	Yes
Hahnemuhle William Turner Textured 190gr	HP Premium Heavy Weight Coated Paper	Best	B	Yes	Yes
			C	Yes	Yes
			Roll	N/A	
Hahnemuhle William Turner Textured 310gr	HP Coated Paper	Maximum (Best may work in some cases)	B	Yes	Yes
			C	Yes	Yes
			Roll	N/A	

Legend for Sizes:

- **Green:** No problem for picking.
- **Yellow:** May cause some problems. We recommend loading one at time.
- **Red:** Difficult or impossible to pick.

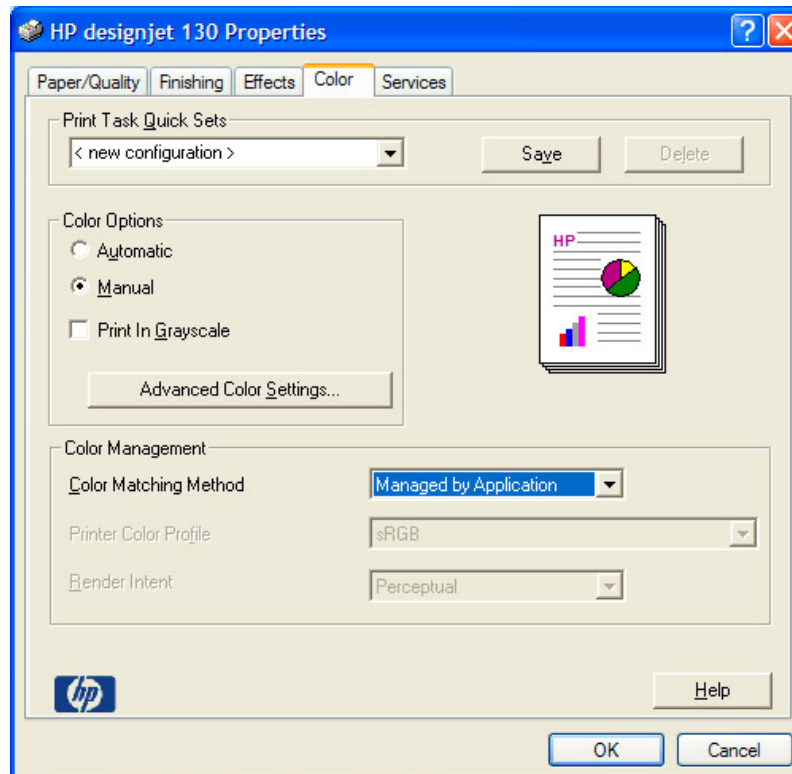
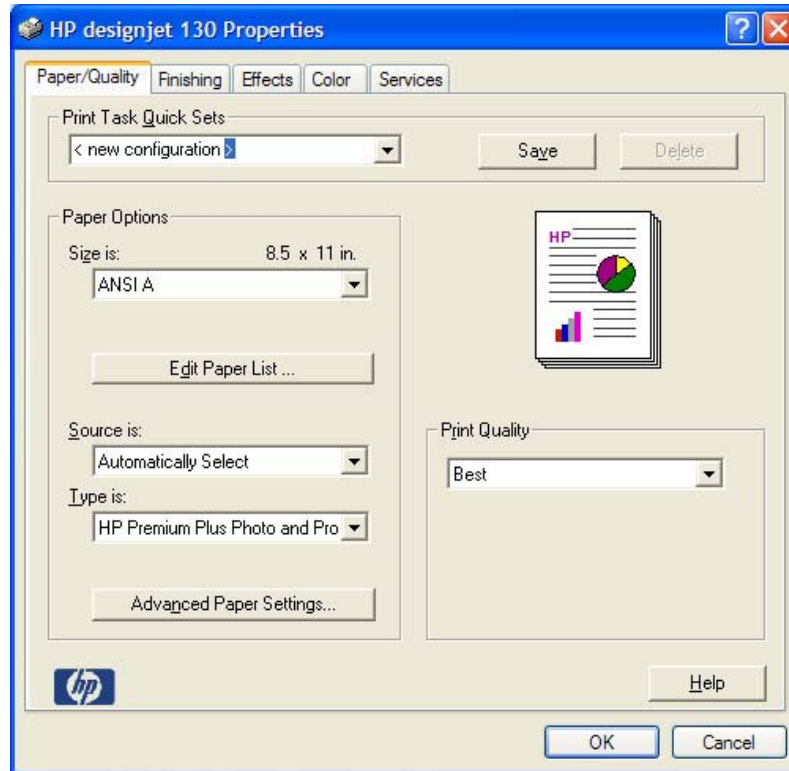
b) **Color Options:** Manual.

* For the HP Canvas Matte check the option **Disable Automatic Cutter** (it is next to the media settings, in Windows it is under the **Advanced Paper Settings...** button).

c) **Color Matching Method:** Managed by Application.

d) Click **OK** until print.

See these screenshots as examples (Windows screenshots):



* These profiles and media recommendations are provided "AS IS" with no guarantees, warranty or support, expressed or implied.

For more information on HP Designjet products

www.hp.com/go/designjet

© 2005 Hewlett-Packard Development Company, L.P. The information contained herein is subject to change without notice. The only warranties for HP products and services are set forth in the express warranty statements accompanying such products and services. Nothing herein should be construed as constituting an additional warranty. HP shall not be liable for technical or editorial errors or omissions contained herein.

Adobe Photoshop and PostScript are trademarks of Adobe Systems Incorporated. PANTONE is Pantone, Inc.'s check-standard trademark for color.

Rev. 1,02/2005

